

# X1C5 Pro portable APRS tracker Manual



X1C5 Pro is a handheld Automatic Position Reporting System using built-in GPS via Radio link/WiFi/Bluetooth to report position over internet or to APRS devices.

## Features:

Support fixed station FIXED, sports SPORT, 2 site modes

Support complete TRACK tracker, support intelligent, timing, PTT linkage, queue beacon

Support beacon additional information, mileage, satellite number, voltage, temperature, air pressure, etc.

Support mileage calculation, support accumulated mileage or automatically clearance

Support for automatic icons (TRACK smart mode)

Support GPS power saving mode (TRACK PTT linkage mode, TRACK timing mode)

Integrated 2.0+4.0 dual mode Bluetooth,

Support Bluetooth output KISS hex, UI, GPWPL, KISS ASC, GS232B and other protocols

Support Bluetooth output GPS data (GPRMC+GPGGA), support mixed output

Support Bluetooth KISS data bidirectional transparent transmission

Support full DIGI relay function, support custom relay name, support relay remote turn-off function

Support remote control peripheral sensor input and relay output module

Built-in advanced CMX programming algorithm

Built-in transmit level, receive level adjuster (-10.5dB -0dB)

Built-in high performance GPS\Beidou\GLONASS multimode hybrid positioning module

Built-in advanced algorithm to support rich data analysis

Support heading, north position, relative motion position calculation

Support APRS distance, elevation target calculation, support G5500 aircraft, vessel and other tracking control

Companion PC setup software (Chinese, English) (requires .NET 4.0)

UHF or VHF options, 1W RF output

Support battery USB direct charging

Support comprehensive GPS interface, beacon list interface, real-time beacon interface, beacon record analysis interface

Built-in temperature\pressure auxiliary sensor (temperature & air pressure values for reference only)

Support off-network use, no network, direct mutual positioning

Support liuyun, APRSdroid, LOCUS, Ovi and other APP

Support user independent firmware upgrade

**Weight:** 99 G (battery included)

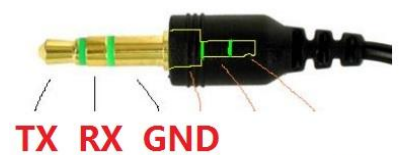
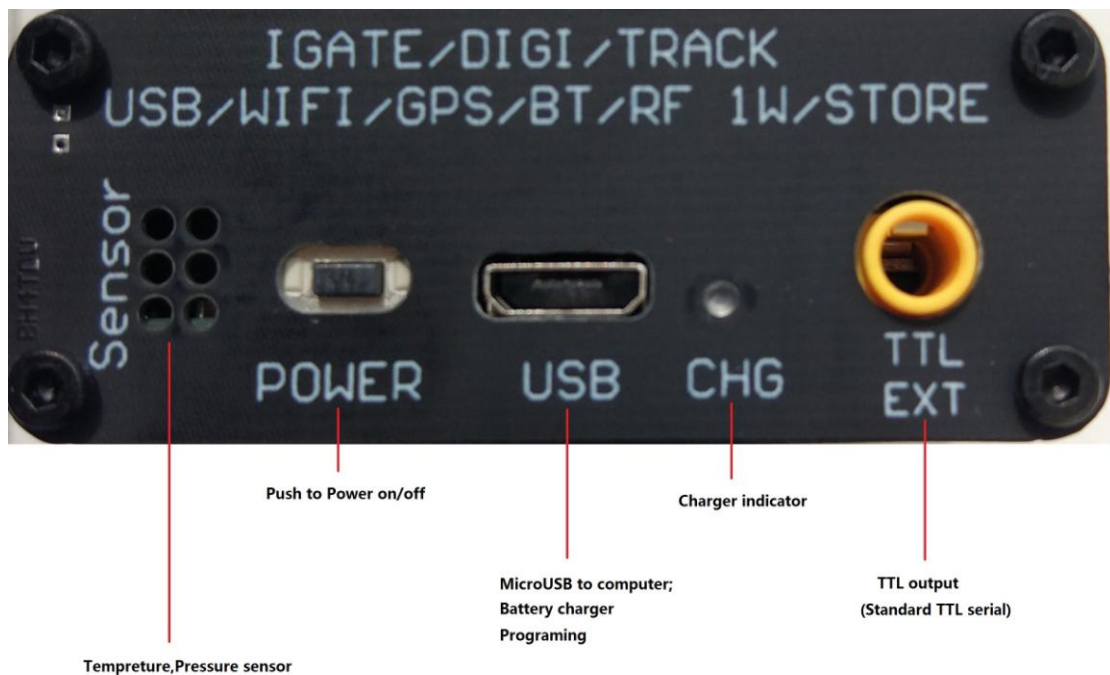
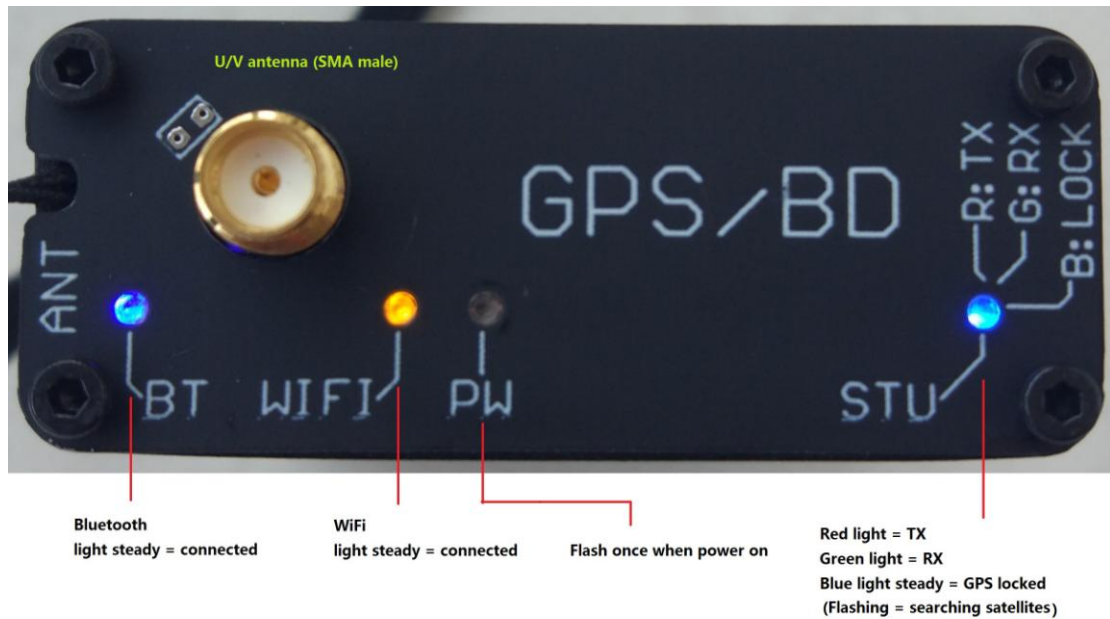
**Dimensions:** 88 x 50 x 20 mm (antenna excluded)

**Note:** Typical GPS locking time is 1 – 5 minutes, please use the tracker outside!

Do not use it under the water!

Turn off the RF module if you only use WiFi to report position, as RF module causes heat!

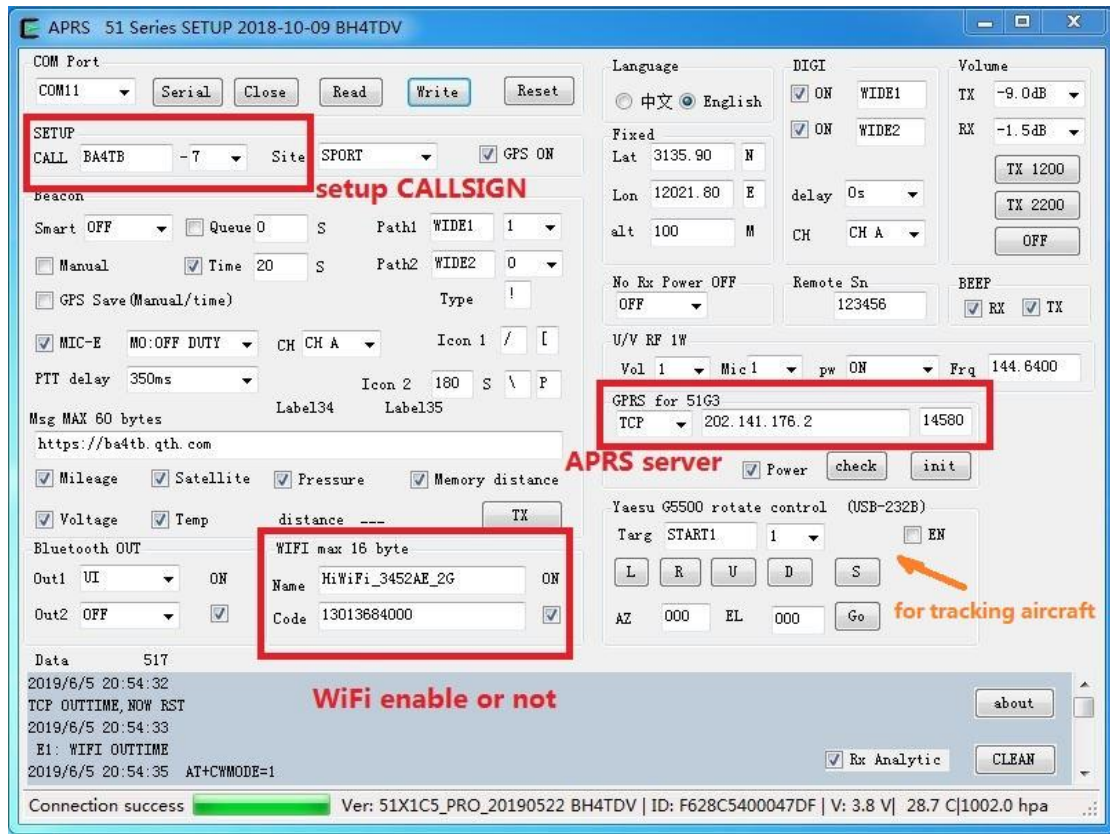
## Operating:



**TTL EXT**  
3.5mm stereo

## Software settings:

- 1, Power on the tracker.
- 2, Connect the USB cable between tracker and computer.
- 3, Install USB driver – CH341 chip and find the correct COM port.
- 4, Use APRS 51Series Setup(version number).exe to program the tracker.



E-mail: [info@ba4tb.gth.com](mailto:info@ba4tb.gth.com)